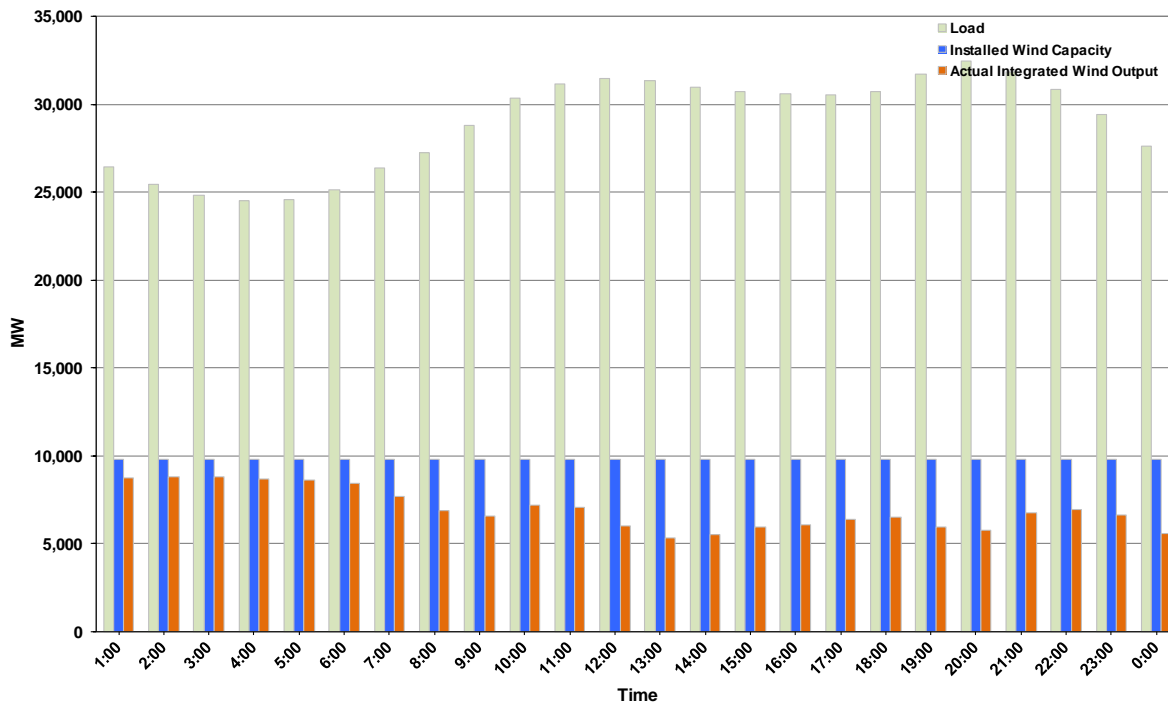




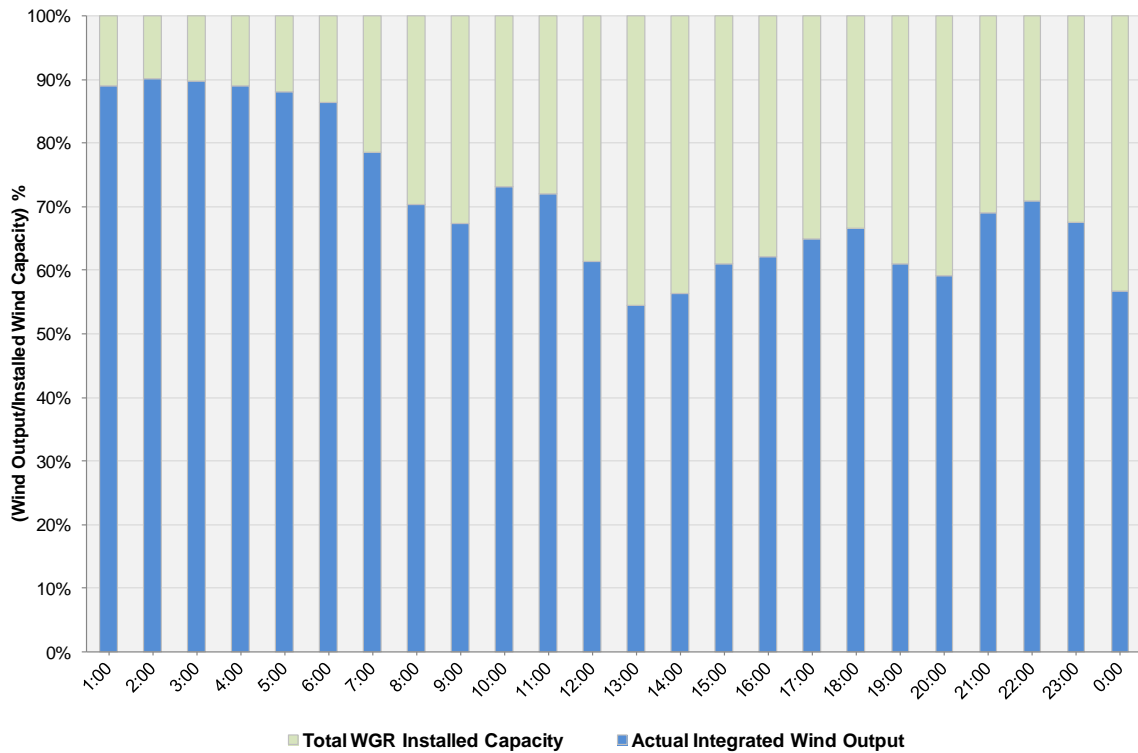
ERCOT Grid Operations Wind Integration Report: 03/09/2013

Peak Load	32,453 MW
Load Peak Hour (HE)	20
Wind over Peak	5,794 MW
Wind Record 02/09/13	9,481 MW
Max Wind Value	9,080 MW
Wind Peak Time	00:00
Wind Integration %	33.37%

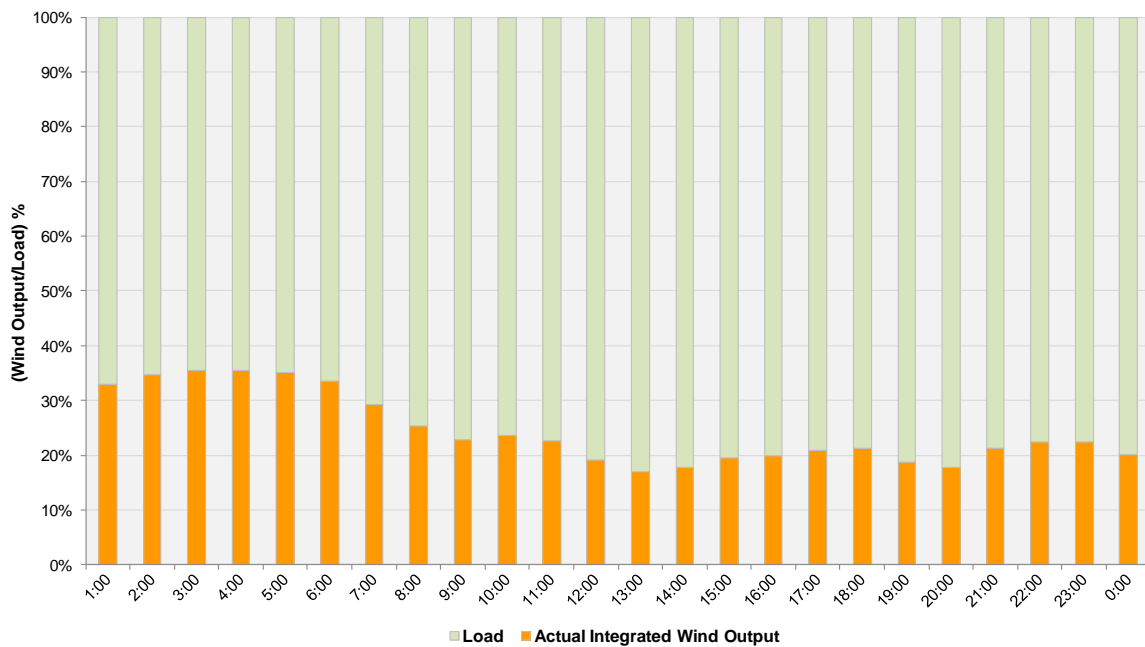
**Hourly Average Actual Load vs. Actual Wind Output
03-09-2013**



Actual Wind Output as a Percentage of the Total Installed Wind Capacity
03-09-2013



Actual Wind Output as a Percentage of the ERCOT Load
03-09-2013



ERCOT Load vs. Actual Wind Output 3/2/2013 - 3/9/2013

